



BY JOHNSON CONTROLS

070.650-SPC (JAN 2011)

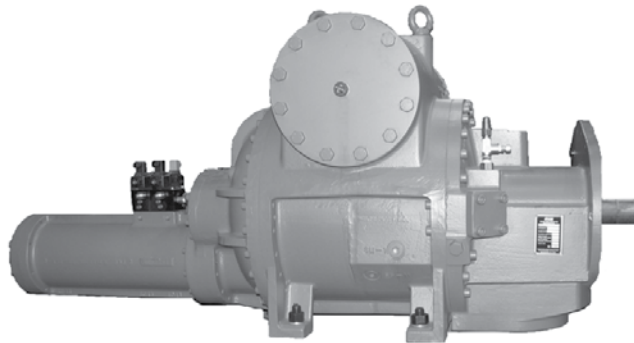
## SPECIFICATIONS

File: EQUIPMENT MANUAL - Section 70  
Replaces: 070-650 SPC (MAY 2010)  
Dist: 10

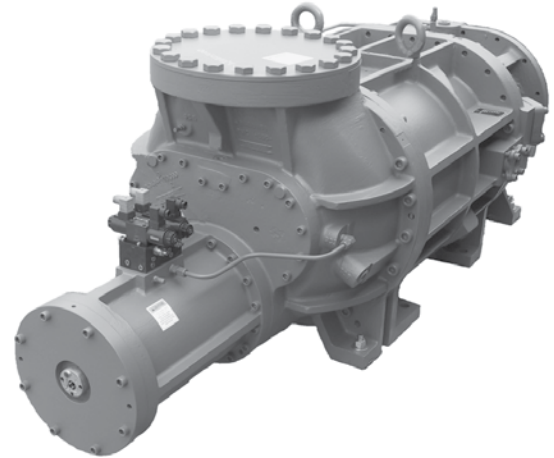
# ROTARY SCREW COMPRESSORS

## Models SGC 1913 through 2824

## Models SGCH / SGCB 3511 through 3524



SGC 1913 - 2824



SGCH / SGCB 3511 - 3524

### FEATURES AND BENEFITS

The Frick® SGC, SGCH & SGCB screw compressors are designed to compress a variety of gases in many different applications including refrigeration, air conditioning, water chilling, wellhead compression, gas gathering, and vapor recovery. Applications include booster duty (low temperature/pressure), high (single) stage, or swing duty compression.

**Stepless Capacity Control** - A hydraulically actuated slide valve moves axially along the rotor mesh line to provide infinite unloading down to approximately 10% of full load capacity for most models. Unloaded gas is bypassed back to suction before compression has begun, allowing the compressor to efficiently accommodate system requirements. External piping is dramatically reduced by cylinder mounted solenoid control valves.

**Variable Volume Ratio** - A hydraulically actuated slide stop adjusts slide valve position to optimize internal discharge pressure. This matches compressor volume ratio to system pressure ratio and eliminates the power penalties associated with under- or overcompression.

**Indicator Transmitters** - Hermetically sealed Indicator Transmitters eliminate contact with process gas.

**Antifriction Bearings** - Cylindrical roller bearings handle radial loads, and four-point angular contact ball bearings, aided by balance pistons, absorb thrust loads. No preloading is required. At design conditions, L10 life is in excess of 100,000 hours. Roller bearings also maintain superior rotor

positioning to minimize internal leakage and provide excellent performance. System differential pressure is normally sufficient as the driving force to supply oil to the bearings, thereby eliminating the need for an oil pump. Antifriction bearings have lower frictional horsepower requirements for lower power consumption. Compressor housings are machined to provide static oil reservoirs for the bearings.

**Built-In Suction Strainer** - Model 19xx through 28xx has an integrated suction strainer with side access on left or right.

**Drive and Motor Arrangement** - These compressors have an optional tunnel for direct mount to flange drivers which supplies optimum alignment, maximum shaft seal life, and low noise.

**Oil Injection** - Injected oil serves to lubricate the bearings, balance piston, and seal, fill any leakage paths between and around the rotors to prevent gas bypassing, and maintain superior efficiencies. Oil injection minimizes noise and vibration. It keeps the compressor cool to prevent overheating by absorbing much of the heat from compression.

**Oil Passages** - Internally machined oil passages reduce the risk of leaks inherent in external piping.

**Made in the USA** - The entire compressor is designed and built in Waynesboro, PA. Expert engineering, automated machining centers, clean temperature controlled assembly, and stringent quality control requirements, all contribute to ensuring easy installation, reliable operation, and convenient servicing.

Please check [www.johnsoncontrols.com/frick](http://www.johnsoncontrols.com/frick) for the latest version of this publication.

### MATERIALS OF CONSTRUCTION

**Castings** - ASTM A48 class 40 gray cast iron or equivalent is standard for pressure-retaining parts. Suction and discharge flanges comply with ANSI B16.1. A 300 class suction is standard for all models. A 300 class discharge flange is standard on all models.

Alternate casing material is ductile iron grade 60-40-18 per ASTM A395 and ASME SA 395 including a Charpy V-notch test at -4°F(-20°C) and a material certificate type 3.1 per EN 10204. Material is similar to European standard EN 1563, material designation EN-GJS-400-18.

**Rotors** - AISI 1141 low carbon steel.

**Bearings** - Rolling elements and rings are AISI 52100 medium carbon alloy steel. Cages are brass, polyamide, or steel. Tolerance quality complies with ABEC 1 through 3.

**Slide Valve Spindle** - AISI 1141 low carbon steel.

**Slide Valve Indicator Rod** - Type 416 stainless steel.

**Slide Stop Indicator Rod** - Type 304 stainless steel.

**Pistons, Spacers, Etc.** - Gray cast iron, A516 steel plate, regular carbon steel plate, or various types of hot rolled, cold rolled or cold drawn steel bar.

**Retaining (Snap) Rings & Spring Washers** - High carbon spring steel.

**Bolts** - Grade 8.8, heat treated, medium carbon steel, socket head cap screws.

**Static Seals** - HNBR O-rings. Viton also available.

**Dynamic Seals** - Carbon filled teflon.

**Shaft Seal** - Spring-loaded stationary carbon end face rides in a stainless steel carrier against a rotating nonmagnetic cast iron alloy (Ni-resist) floating seat. The assembly is fully balanced and capable of sealing high pressure, but is vented to low pressure to extend seal life. Secondary seals are HNBR or viton O-rings. Alternate seal designs and materials are available for some applications.

TYPICAL PERFORMANCE												
Model	R-507 (HCFC)				Ammonia (R-717, NH <sub>3</sub> )				Natural Gas (SG=.65, k=1.26)			
	Capacity		Power		Capacity		Power		Capacity		Power	
	TR	kW	BHP	kW	TR	kW	BHP	kW	MMSCFD	MSCMH	BHP	kW
1913	221	776	265	198	213	749	235	175	0.644	0.759	47	35
1918	294	1034	353	264	284	999	314	234	0.859	1.013	62	47
2313	391	1375	461	343	384	1351	410	306	1.000	1.178	82	61
2317	492	1731	580	432	483	1699	517	386	1.385	1.632	104	78
2321	608	2139	716	534	598	2103	638	476	1.711	2.016	128	96
2813	700	2463	825	615	688	2420	736	549	1.990	2.344	149	111
2817	882	3102	1039	775	866	3046	926	691	2.506	2.952	187	140
2821	1061	3732	1250	932	1044	3673	1117	833	3.015	3.552	225	168
2824 <sup>(5)</sup>	N/A	N/A	N/A	N/A	N/A	N/A	N/A	N/A	3.410	4.021	246	183
3511	1086	3818	1330	992	1066	3748	1169	872	3.191	3.759	233	174
3515	1480	5206	1814	1352	1453	5111	1594	1189	4.352	5.127	318	237
3519	1884	6626	2493	1859	1850	6505	2032	1515	5.539	6.525	405	302
3524 <sup>(6)</sup>	N/A	N/A	N/A	N/A	N/A	N/A	N/A	N/A	6.979	8.23	510	381

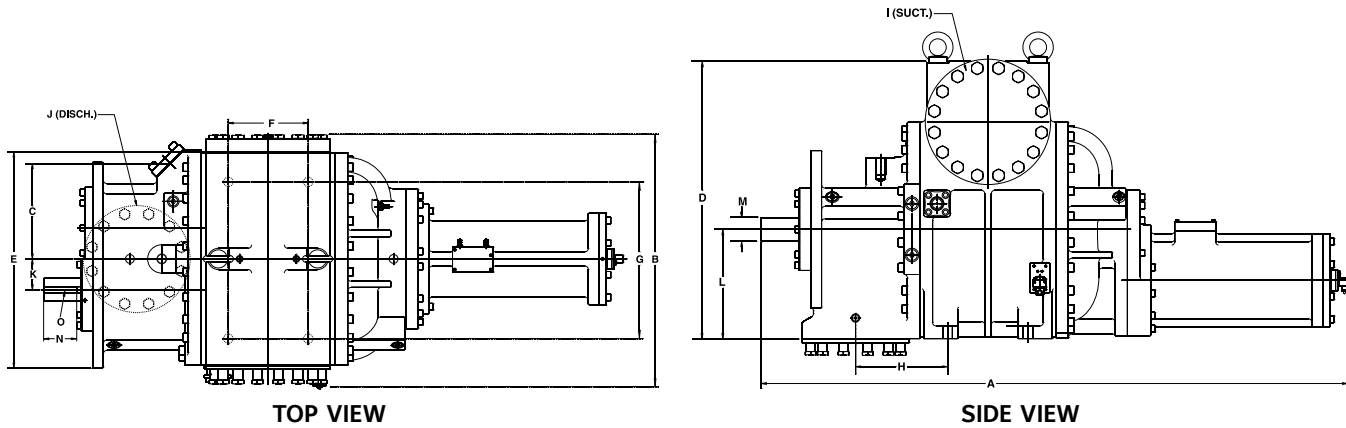
**Notes:**

1. SG=Specific Gravity, k=Ratio of Specific Heats (Cp/Cv), TR=Tons Refrigeration, kW=Kilowatts, BHP=Brake Horsepower, MMSCFD=Million Standard Cubic Feet per Day, MSCMH=Thousand Standard Cubic Meters per Hour.
2. R-507 ratings based on 20°F (-6.7°C) suction and 95°F (35°C) condensing with 10°F (5.5°C) liquid subcooling and 10°F (5.5°C) suction superheat at 3550 RPM.
3. R-717 ratings based on 20°F (-6.7°C) suction and 95°F (35°C) condensing with 10°F (5.5°C) liquid subcooling and 10°F (5.5°C) suction superheat at 3550 RPM.
4. Natural gas ratings based on 25 PSIA (172 kPaA), 80°F (27°C) suction and 75 PSIA (517 kPaA) discharge at 1750 RPM.
5. SGC 2824 used mainly as a booster but can also run certain high stage applications.
6. SGC 3524 is used only for booster applications and gas compression.

DESIGN LIMITATIONS AND MECHANICAL CHARACTERISTICS													
This information is intended to be used in conjunction with CoolWare™ to establish that an application is within the operating envelope for the compressor. Consult Johnson Controls for the latest CoolWare™ version.													
	SGC MODEL									SGCH / SGCB MODEL			
	1913	1918	2313	2317	2321	2813	2817	2821	2824	3511	3515	3519	3524
Approx. Compr. Wt. lb (kg)	2071 (939)	2291 (1039)	2965 (1345)	3265 (1481)	3918 (1777)	4906 (2225)	5256 (2384)	6406 (2906)	6675 (3028)	9005 (4085)	9275 (4207)	9715 (4407)	10,155 (4606)
Rotor Dia. mm	193		233			283			355				
Drive Arrangement	Directly driven by the male rotor in the clockwise direction as viewed from the driver												
Minimum Driver Speed <sup>(1)(2)</sup> RPM	600 <sup>(1)(2)</sup>												
Maximum Driver Speed RPM	4500				4200 (4500 w/High Temp Bearings)				4200				
Max. Input Power to Rotor Shaft bhp (kW)	450 (336)		750 (559)			1400 (1044)			3500 (2609)				
Min. Breakaway Torque ft-lb (Nm)	10 (13.5)		14 (19.0)			20 (27.1)			25 (33.9)				
Mass Moment of Inertia <sup>(3)</sup> ft <sup>2</sup> -lbm (m <sup>2</sup> -kg)	5.1 (0.21) <sup>(3)</sup>	6.5 (0.27) <sup>(3)</sup>	13 (0.55) <sup>(3)</sup>	16 (0.67) <sup>(3)</sup>	18 (0.77) <sup>(3)</sup>	33 (1.4) <sup>(3)</sup>	41 (1.7) <sup>(3)</sup>	48 (2.0) <sup>(3)</sup>	56 (2.4) <sup>(3)</sup>	97 (4.1) <sup>(3)</sup>	110 (4.8) <sup>(3)</sup>	135 (5.7) <sup>(3)</sup>	154 (6.5) <sup>(3)</sup>
Suction Flange in. (mm)	5 (127)	6 (152)		8 (203)			10 (254)			14 (356)			
Discharge Flange in. (mm)	4 (102)		6 (152)			8 (203)			10 (254)				
Theoretical Displacement ft <sup>3</sup> /rev. (m <sup>3</sup> /rev.)	0.16653 (.004716)	0.22204 (.00624)	0.29301 (.008297)	0.36897 (.01045)	0.4558 (.01291)	0.52501 (.01487)	0.66113 (.01872)	0.79546 (.02253)	0.89857 (.02545)	0.82248 (.02329)	1.1216 (.03177)	1.4275 (.04042)	1.80316 (.05106)
Displ. at 3550 rpm Driver Speed ft <sup>3</sup> /min (m <sup>3</sup> /hr)	591 (1004)	788 (1339)	1040 (1767)	1310 (2225)	1618 (2749)	1864 (3167)	2347 (3988)	2824 (4798)	3190 (5420)	2920 (4961)	3982 (6765)	5068 (8610)	6401 (10,875)
Displ. at 2950 rpm Driver Speed ft <sup>3</sup> /min (m <sup>3</sup> /hr)	491 (835)	655 (1113)	864 (1468)	1088 (1849)	1345 (2284)	1549 (2631)	1950 (3314)	2347 (3987)	2651 (4504)	2426 (4122)	3309 (5621)	4211 (7155)	5319 (9037)
Displ. at 1750 rpm Driver Speed ft <sup>3</sup> /min (m <sup>3</sup> /hr)	291 (495)	389 (660)	513 (871)	646 (1097)	798 (1355)	919 (1561)	1157 (1966)	1392 (2365)	1573 (2673)	1439 (2445)	1963 (3335)	2498 (4244)	3156 (5361)
Displ. at 1450 rpm Driver Speed ft <sup>3</sup> /min (m <sup>3</sup> /hr)	242 (410)	322 (547)	425 (722)	535 (909)	661 (1123)	761 (1293)	959 (1629)	1153 (1960)	1303 (2214)	1192 (2026)	1626 (2763)	2072 (3517)	2615 (4442)
Capacity Control	Infinitely adjustable from 100% to approx. 10% (15% for 2824 & 3519)(20% for 3524)												
Volume Ratio	Infinitely adjustable from 5.0 to 2.2 (2824 - 4.1 to 2.0)(3524 - 4.5 to 2.4)												
Max. Inlet Press. psig (barg) <sup>(4)</sup>	150.0 <sup>(4)</sup> (10.3)												
Max. Outlet Press. psig (barg) <sup>(4)</sup>	400.0 <sup>(4)</sup> (27.6)												
Max. Outlet Press. psig (barg) <sup>(5)</sup>	600.0 <sup>(5)</sup> (41.4)												
Minimum Inlet Temp. <sup>(6)</sup> °F (°C)	-76.0 <sup>(6)</sup> (-60.0)												
Maximum Inlet Temp. °F (°C)	200.0 (93.3)												
Maximum Outlet Temp. °F (°C)	250.0 (121.1)												
Maximum Temp. Dif. (Suct. to Disch.) °F (°C)	250.0 (138.9)												
Max. Bearing Oil Supply Temp. °F (°C)	230.0 (110.0)												

**Notes:**

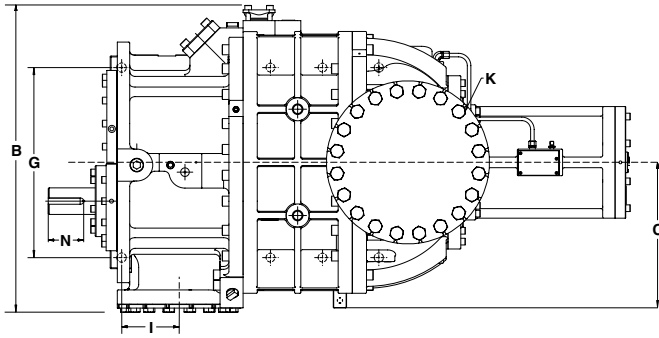
- Contingent upon compression ratio, bearing L10 limitations, oil viscosity, and other operating conditions.
- Compressor suction flow may be zero at full unload slide valve position below 1800 RPM (1200 for 355).
- Does not include coupling. Resolved to drive shaft.
- Standard ASTM A48 class 40 gray cast iron housings. Some compressors capable of higher pressures. Consult Factory.
- ASTM A395 grade 60-40-18 ductile iron housings.
- At compressor suction flange. Minimum evaporator temperature can be lower.



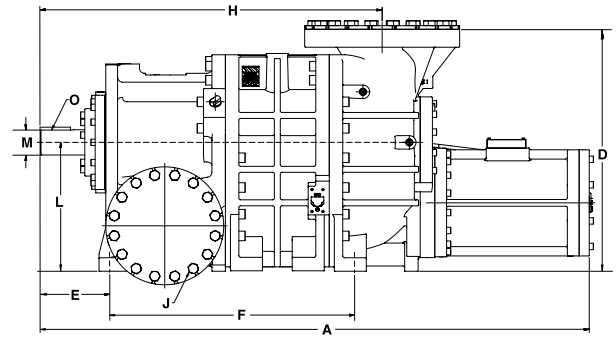
APPROXIMATE DIMENSIONS		SGC								
		1913	1918	2313	2317	2321	2813	2817	2821	2824
A	in. (mm)	56.90 (1445.3)	60.32 (1532.1)	65.18 (1655.6)	68.39 (1737.1)	78.76 (2000.6)	77.94 (1979.7)	81.84 (2078.8)	93.80 (2382.5)	98.46 (2500.9)
B	in. (mm)	27.50 (698.5)	28.04 (712.2)	28.60 (726.4)	29.83 (757.7)	29.89 (759.2)	34.71 (881.6)	35.46 (900.7)	35.53 (1346.2)	
C	in. (mm)	9.98 (253.5)		10.98 (278.8)			13.46 (341.9)			
D	in. (mm)	26.30 (668.0)	27.80 (706.1)	32.12 (815.8)	33.12 (841.2)	33.12 (841.2)	37.00 (939.8)	39.00 (990.5)		
E	in. (mm)	22.86 (580.7)		26.10 (662.9)			26.29 (667.7)			
F	in. (mm)	4.92 (125.0)	8.34 (211.8)	6.52 (165.6)	9.72 (246.9)	13.4 (340.4)	7.31 (185.7)	11.21 (284.7)	15.67 (397.9)	19.02 (483.1)
G	in. (mm)	16.54 (420.1)		20.12 (511.0)			22.00 (558.8)			
H	in. (mm)	8.19 (208.1)		9.58 (243.2)			12.88 (327.2)			
I	in. (mm)	5.00 (127.0)	6.00 (152.4)		8.00 (203.2)			10.00 (254.0)		
J	in. (mm)	4.00 (101.6)		6.00 (152.4)			8.00 (203.2)			
K	in. (mm)	2.98 (75.7)		3.60 (91.4)			4.37 (111.0)			
L	in. (mm)	11.42 (290.1)		12.87 (326.9)			15.25 (387.3)			
M	in. (mm)	2.25 (57.2)		2.50 (63.5)			3.25 (82.6)			
N	in. (mm)	3.75 (95.3)		3.81 (96.8)			5.00 (127.0)			
O	in. (mm)	.50 (12.7)		.63 (15.9)			.88 (22.2)			

**Notes:**

1. SGC 2817 is shown for illustrative purposes only. Configurations of other compressor sizes vary slightly.
2. Model 19xx - 28xx has an integrated suction strainer with side access on left or right.



TOP VIEW



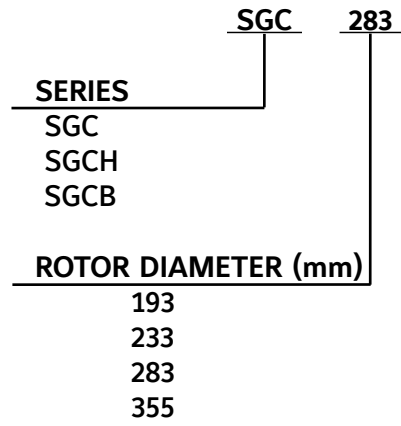
SIDE VIEW

APPROXIMATE DIMENSIONS		DIMENSIONAL OUTLINE			
		SGCH / SGCB			
		3511	3515	3519	3524
A	in. (mm)	81.49 (2069.7)	87.08 (2211.8)	92.68 (2353.9)	99.69 (2532.2)
B	in. (mm)	43.32 (1100.3)	42.07 (1068.6)		
C	in. (mm)	20.54 (521.8)			
D	in. (mm)	35.87 (911.2)			
E	in. (mm)	10.36 (263.2)		10.37 (263.3)	
F	in. (mm)	36.55 (928.2)	42.14 (1070.3)	47.73 (1212.4)	54.75 (1390.6)
G	in. (mm)	27.00 (685.8)			
H	in. (mm)	50.76 (1289.2)	56.36 (1431.3)	61.95 (1573.5)	68.97 (1751.7)
I	in. (mm)	8.13 (206.5)			
J	in. (mm)	10.00 (254.0)			
K	in. (mm)	5.47 (139.0)			
L	in. (mm)	19.12 (485.7)			
M	in. (mm)	3.75 (95.3)			
N	in. (mm)	5.00 (127.0)			
O	in. (mm)	0.875 (22.2)			

**Notes:**

1. A 3511 is shown for illustrative purposes only. Configurations of other compressor sizes vary slightly.
2. 355 size compressors have a side discharge arrangement. The flange is located on the right side of the outlet housing as viewed from the driver.
3. The drive end mounting holes in model 355 compressors are located inboard of the discharge flange with respect to the drive shaft.
4. Suction strainer and housing not integrated in models 35xx.

MODEL NUMBER EXPLANATION



- 1913, 1918 = 193
- 2313, 2317, 2321 = 233
- 2813, 2817, 2821, 2824 = 283
- 3511, 3515, 3519, 3524 = 355

NOTES

NOTES